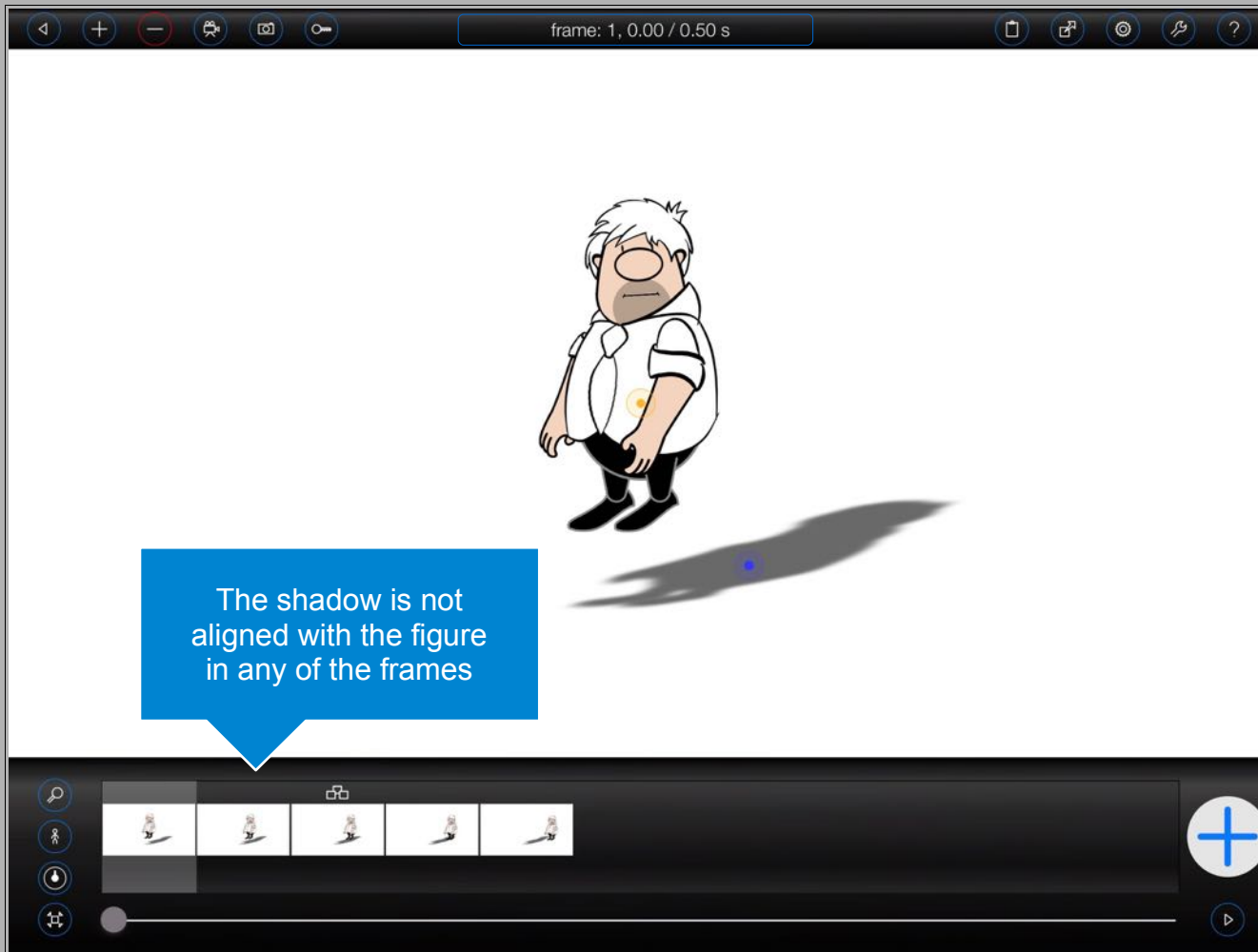




Align Clone

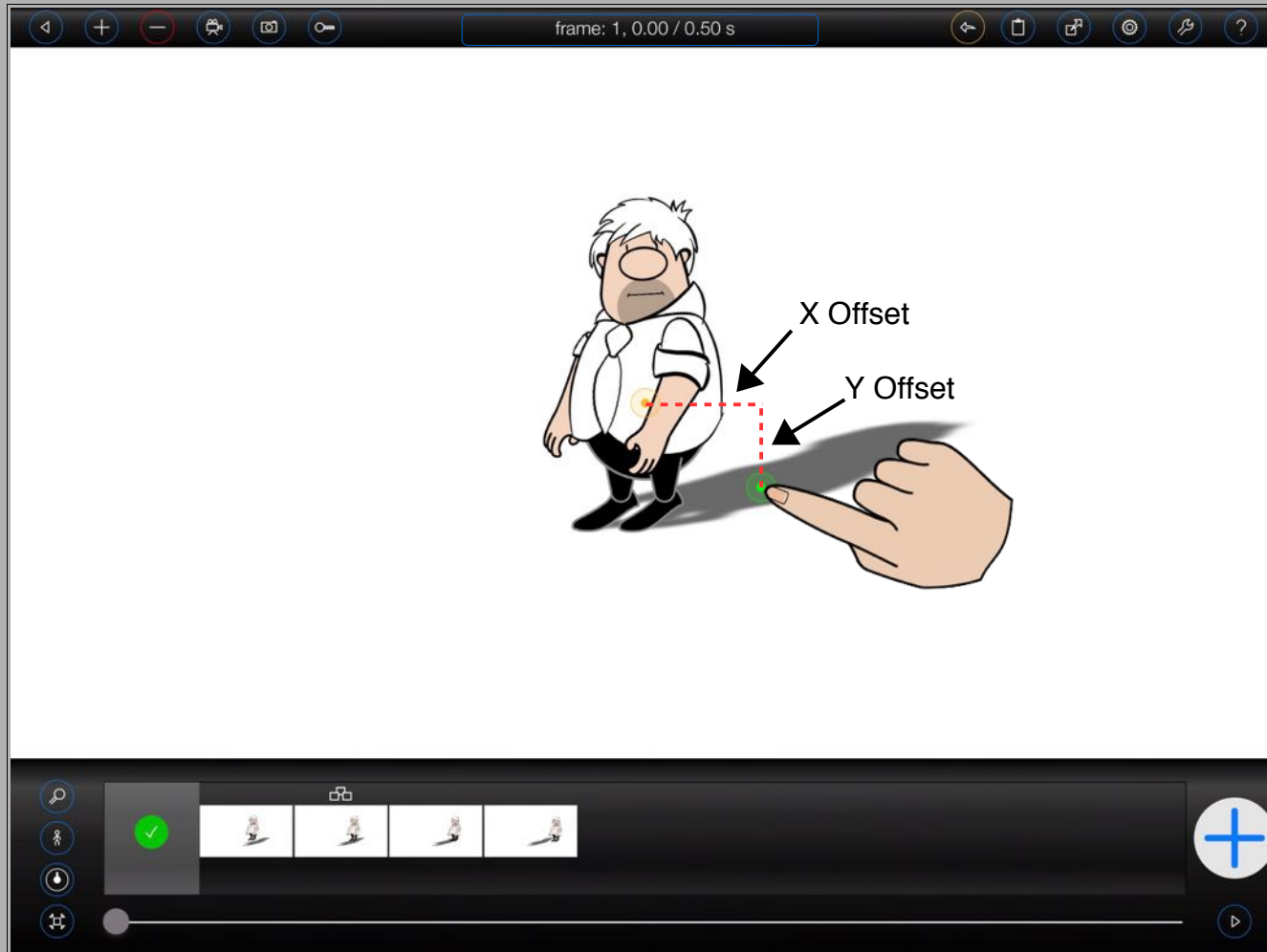
If you've been playing with shadows then you'll know that its possible to get into situations where the shadows are no longer aligned with their parent figure, particularly if you've used 'keyframing' to modify the parent figure's size across a number of frames (or added the shadow to multiple frames using Animation Pro's 'keyframing' capabilities).



Now, if you know that **the shadow should always maintain the same X and Y offset from the parent figure**, then the problem can be easily addressed. Please also note that this solution can be applied to any clone – I'm just using shadows as a convenient example.

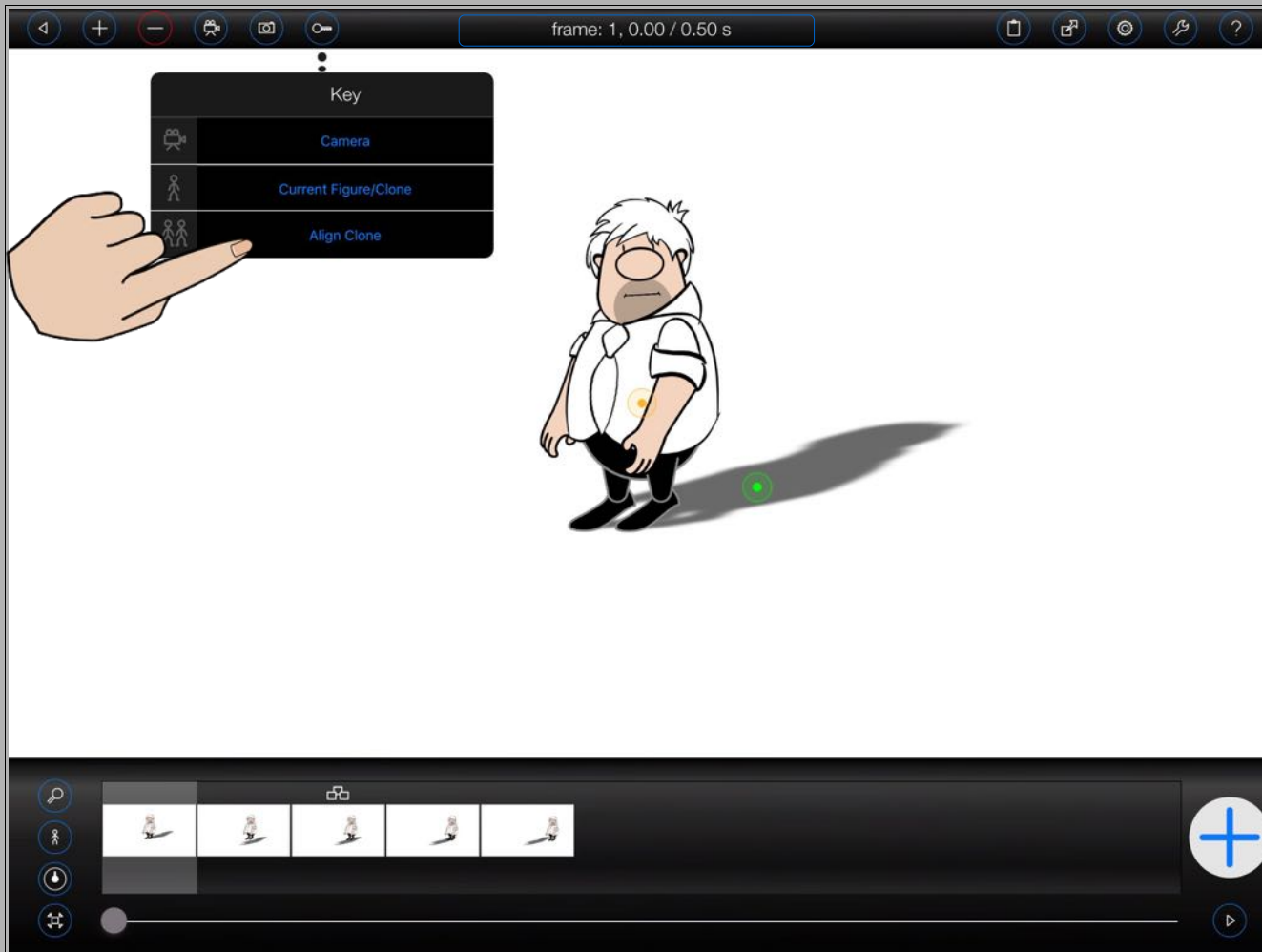
Step 1

Move the shadow/clone into the correct position on one of the frames:



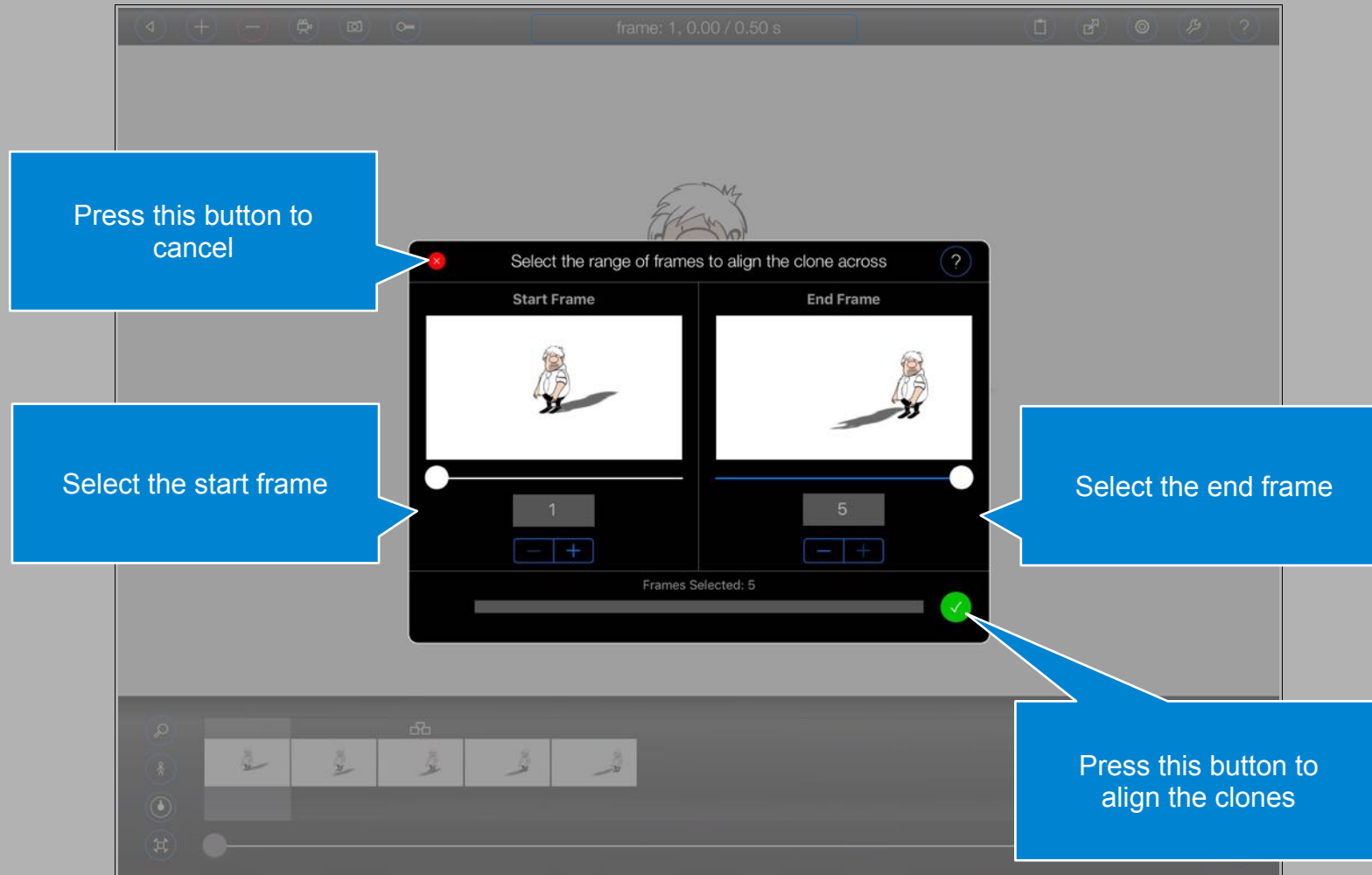
Step 2

Select the 'Align Clone' option from the  'Key' menu:

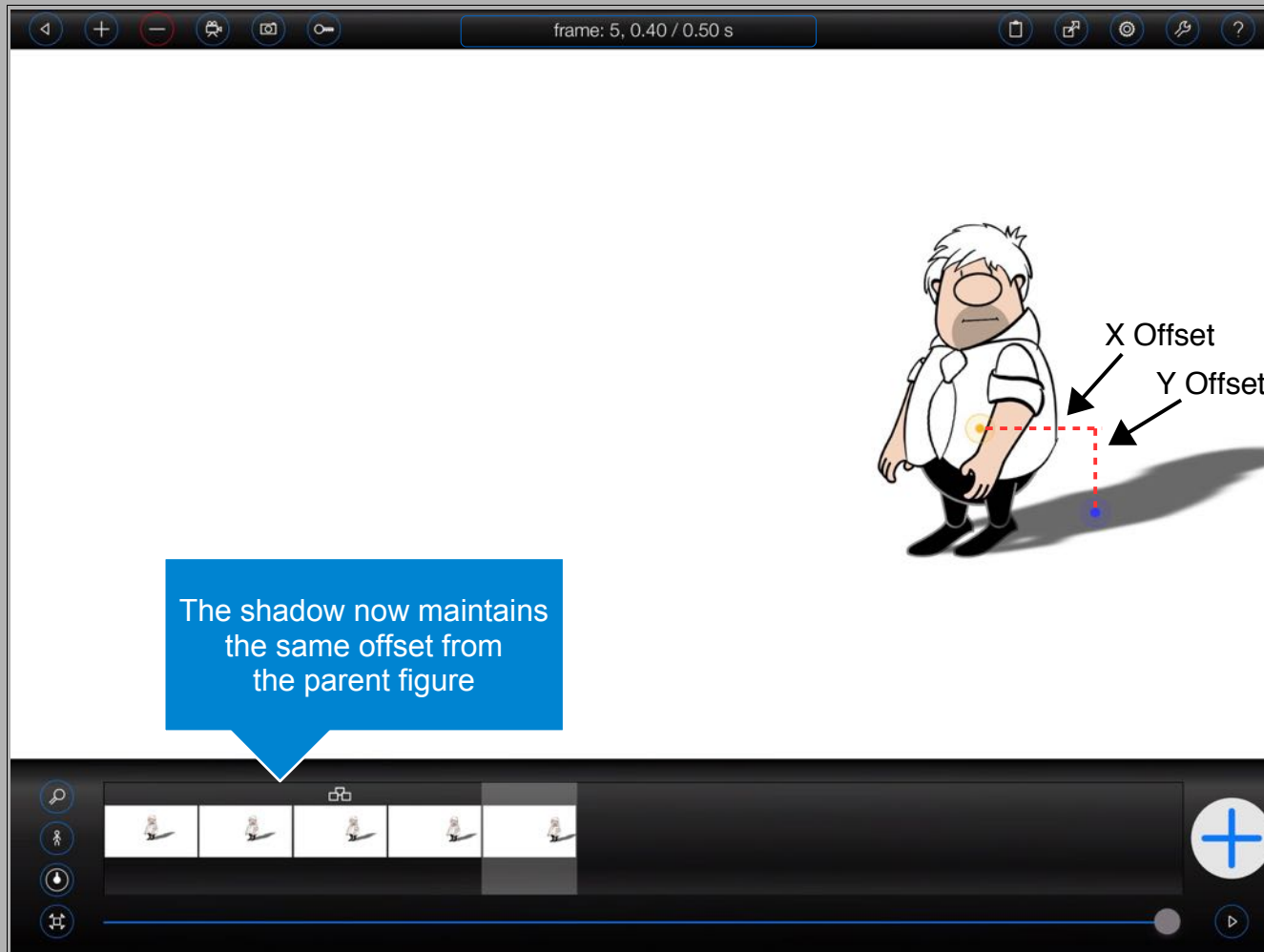


Step 3

Select the range of frames that you'd like to adjust and press the green tick button:



Animation Pro will adjust the clone in each of the selected frames (including any user tweens) such that the clone maintains the same X and Y offset from its parent figure:



Please note:

This feature should only be used in situations where the shadow/clone is supposed to maintain the same X and Y offset from its parent figure.